

CJO Audition Scales

Flute: E Major

Two staves of musical notation for the E Major scale. The first staff shows the ascending scale: E4, F#4, G4, A4, B4, C#5, D5, E5. The second staff shows the descending scale: D5, C#5, B4, A4, G4, F#4, E4, followed by a whole rest and a double bar line.

Flute: F melodic minor

Two staves of musical notation for the F melodic minor scale. The first staff shows the ascending scale: F4, G4, A4, Bb4, C5, D5, Eb5, F5. The second staff shows the descending scale: Eb5, D5, C5, Bb4, A4, G4, F4, followed by a whole rest and a double bar line.

Oboe: D Major

Two staves of musical notation for the D Major scale. The first staff shows the ascending scale: D4, E4, F#4, G4, A4, B4, C#5, D5. The second staff shows the descending scale: C#5, B4, A4, G4, F#4, E4, D4, followed by a whole rest and a double bar line.

Oboe: G melodic minor

Two staves of musical notation for the G melodic minor scale. The first staff shows the ascending scale: G4, A4, Bb4, C#5, D5, Eb5, G5. The second staff shows the descending scale: Eb5, D5, C#5, Bb4, A4, G4, followed by a whole rest and a double bar line.

Clarinet: A Major

Two staves of musical notation for the A Major scale. The first staff shows the ascending scale: A3, B3, C#4, D4, E4, F#4, G#5, A5. The second staff shows the descending scale: G#5, F#4, E4, D4, C#4, B3, A3, followed by a whole rest and a double bar line.

Clarinet: G melodic minor

Two staves of musical notation for the G melodic minor scale. The first staff shows the ascending scale: G4, A4, Bb4, C#5, D5, Eb5, G5. The second staff shows the descending scale: Eb5, D5, C#5, Bb4, A4, G4, followed by a whole rest and a double bar line.

Bassoon: F Major



Bassoon: G melodic minor



Horn: A Major



Horn: C melodic minor



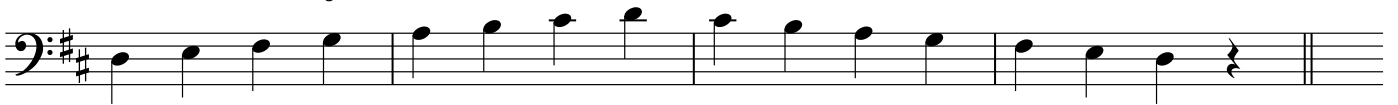
Trumpet: D Major



Trumpet: F melodic minor



Trombone: D Major



Trombone: F melodic minor



Tuba: D Major



Tuba: F melodic minor



Bells: D Major



85



Bells: C melodic minor



93

